

*Tough as nails.  
Heart of gold.*



**THISTLE  
SHOES**  
- SCOTLAND -



# The story of the ghillie brogues stretches back through Scottish history.

A ghillie – if you should live outside Scotland – is the man or boy who was the Highland chief's attendant. In later times it referred to somebody who would accompany others on hunting and fishing trips. Being a ghillie was an honourable profession but a hard one. It was the ghillie's lot to carry the guns, the rods – and on occasion their owners.





And they walked. Through the bogs and rivers and bracken and heather, scaling the highlands or scrambling the lowlands, they walked. If the walking was hard on the man it was hell on his footwear. So came the ghillie brogue.

The ghillie brogue started out as a shoe that would drain water and dry quickly. In the original ghillie brogue, the laces were above the ankle so the shoes wouldn't get stuck in the mud. Each shoe had a patterned network of fine holes punched in the leather, known as brogueing. This was no designer's frippery, Far from it. Simply, it was to help the water drain.

Thistle Shoes are based in Glenrothes, Scotland and have been supplying quality products since 1984. Today, Thistle makes ghillie brogues as they have always been made. Tough as nails – but with a heart of gold. Not unlike the people for whom they're named.

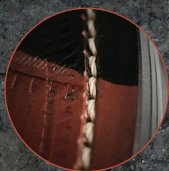




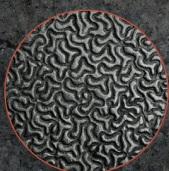
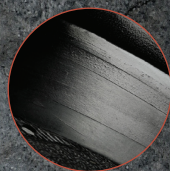
## Time-tested shoemaking craftsman

*Thistle shoes are made with the skills and crafts of old. We use the finest leathers that we can find for durability, flexibility and, of course, smartness. We stitch the soles to the uppers and use brass nails on the heels. There are faster and easier ways to make shoes but this is the way we find the best.*

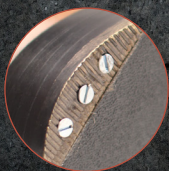
**FULLY STITCHED SOLE**  
MAXIMUM STRENGTH



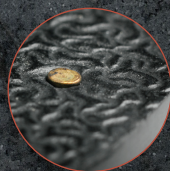
**GOODYEAR WELTED CONSTRUCTION**  
SUPREME STABILITY



**LIGHTWEIGHT RUBBER HEEL**  
ALL TERRAIN MOBILITY



**STEEL QUARTER TIPS**  
MAXIMUM WEAR



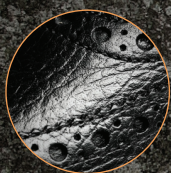
**BRASS NAILS**  
LASTING COHESION



## With a wee nod to modern technology

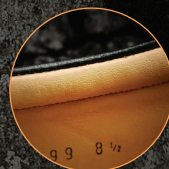
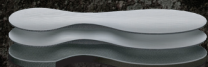
Goodyear welted is the highest grade of construction of shoe manufacturing in the world. A pair of Goodyear welted shoes can take up to eight weeks to make with up to 75 shoe parts and can have over 200 different operations involved. The "welt" is a strip of leather that is stitched to the upper and the insole, and to which the sole will also be stitched. The soles are lock stitched using two separate threads, for maximum strength and the edges of the soles are trimmed to shape using freehand by a highly skilled craftsman. Goodyear welted is the best type of shoe construction in the world.

### PREMIUM LEATHERS FINISH AND DURABILITY



### LEATHER LINED BREATHABILITY AND COMFORT

### CUSHIONED LEATHER INSOLES OPTIMUM COMFORT



### PADDED TOP LINE ANKLE AND HEEL SUPPORT





# Piper Ghillie Brogue

*Our piper collection has been developed in conjunction with world class pipers for lasting comfort and maximum durability. Thistle shoes offer the best quality and durability to the pipe bands whilst ensuring comfort on those long marches. These shoes are made using the goodyear welted construction, one of the best quality shoe construction in the world. The quality of the welt and finished lock stitch can clearly be seen on the traditional commando sole unit.*





## Regimental Piper Ghillie Brogue

The shoe has a heavy grained quality leather upper for the more traditional regimental finish. The shoe is leather lined to allow the foot to breathe and includes a padded leather insole and top line for maximum comfort. Featured on this shoe are the traditional steel quarter tips which are hand screwed into the heel for maximum durability and authenticity.

- ✓ Goodyear Welted construction
- ✓ Heavy grained quality leather upper
- ✓ Fully Leather lined
- ✓ Padded leather insole and top line for maximum comfort
- ✓ Hand screwed steel quarter tip on heel for maximum durability and authenticity
- ✓ Lightweight rubber sole for all terrain mobility and grip



## Piper Ghillie Brogue

The luxury leather upper has a waxy finish. The shoe is leather lined to allow the foot to breathe and includes a padded leather insole and top line for maximum comfort around the heel and ankle. Featured on this shoe are the traditional steel quarter tips which are hand screwed into the heel.

- ✓ Goodyear Welted construction
- ✓ Genuine waxy leather upper for added wetweather protection
- ✓ Fully Leather lined
- ✓ Padded leather insole and top line for maximum comfort
- ✓ Hand screwed steel quarter tip on heel for maximum durability and authenticity
- ✓ Lightweight rubber sole for all terrain mobility and grip





# Premium Ghillie Brogue

*Thistle Shoes Goodyear Welted collection using the finest leather and materials available. Our premium ghillie brogues are for those gentlemen who enjoy the finer things in life and appreciate the craftsmanship of shoe making. The quality of the welt and finished lock stitch can clearly be seen on the beautifully finished sole unit.*





## Executive Grained Ghillie Brogue

This is our executive grained Ghillie brogue. This shoe is made using the goodyear welted construction, where the quality of the welt and finished lock stitch can clearly be seen. The shoe has a heavy grained quality leather upper for the more traditional look. The shoe is leather lined to allow the foot to breathe and includes a padded leather insole and top line for maximum comfort around the heel and ankle. The Thistle logo is engraved onto the leather sole unit and with steel quarter tips hand screwed into the heel for maximum durability and authenticity.

- ✓ Fully featured, executive grade shoe
- ✓ Goodyear Welted construction
- ✓ Heavy grained quality leather upper
- ✓ Fully Leather lined
- ✓ Padded leather insole and top line for maximum comfort
- ✓ Hand screwed steel quarter tip on heel for maximum durability and authenticity
- ✓ Thistle logo engraved on leather sole unit with stitched detail



## Luxury Ghillie Brogue I I I 2GW

This is our premium Ghillie brogue. This shoe is made using the goodyear welted construction, where the quality of the welt and finished lock stitch can clearly be seen. The luxury leather upper has a high shine finish. The shoe is leather lined to allow the foot to breathe and includes a padded leather insole and top line for maximum comfort around the heel and ankle. The Thistle logo is engraved onto the leather sole unit and with steel quarter tips hand screwed into the heel for maximum durability and authenticity.

- ✓ Fully featured, executive grade shoe
- ✓ Goodyear Welted construction
- ✓ Genuine soft leather upper, polished finish
- ✓ Fully Leather lined
- ✓ Padded leather insole and top line for maximum comfort
- ✓ Hand screwed steel quarter tip on heel for maximum durability and authenticity
- ✓ Thistle logo engraved on leather sole unit with stitched detail.





## Formal Buckle Kilt Brogue 1239GW

This is a classic buckle style brogue for formal events, especially good for military events or for those who choose not to wear the traditional laced Ghillie as this is replaced with a strap and buckle fixture. This shoe is made using the goodyear welted construction, where the quality of the welt and finished lock stitch can clearly be seen. The brogue comprises of quality leather upper with a high shine finish and large buckle detail on the front of the shoe. The shoe is leather lined to allow the foot to breathe and includes a padded leather insole and top line for maximum comfort. The Thistle logo is engraved onto the leather sole unit and with steel quarter tips hand screwed into the heel for maximum durability and authenticity.

- ✓ A traditional evening wear buckle shoe
- ✓ Goodyear Welted construction
- ✓ Genuine soft leather upper, polished finish
- ✓ Fully Leather lined
- ✓ Padded leather insole and top line for maximum comfort
- ✓ Hand screwed steel quarter tip on heel for maximum durability and authenticity
- ✓ Thistle logo engraved on leather sole unit with stitched detail



## Comfort Flexi light Ghillie Brogue

This ghillie offers the most superior comfort. The upper is made from the softest calf upper and has a subtle shine. This style is soft leather lined with full cushioned leather insole and padded top line. The sole unit is leather grooved to enable flexibility.

- ✓ Ultra comfort and lightweight
- ✓ Genuine soft and smooth leather upper, subtle shine finish
- ✓ Fully Leather lined
- ✓ Padded leather insole and top line for maximum comfort around the ankle and heel
- ✓ Ultimate flex sole unit with stitched detail



## Day Brogue 873QW

*This is a classic oxford day brogue suitable for any occasion. This shoe is made using the goodyear welted construction, where the quality of the welt and finished lock stitch can clearly be seen. The calf leather upper has a matt finish. The shoe is leather lined to allow the foot to breathe and includes a padded leather insole for comfort. The Thistle logo is engraved onto the leather sole unit.*

- ✔ Classic Oxford-style day brogue available in black and burnished brown
- ✔ Goodyear Welted construction
- ✔ Genuine soft smooth leather upper with subtle shine finish
- ✔ Fully Leather lined
- ✔ Padded leather insole for comfort
- ✔ Thistle logo engraved on leather sole unit with stitched detail





# Classic Ghillie Brogue

*Thistle Shoes classic section offer excellent quality of brogues with several different finishes. I deal for the hire market and also offers feature shoes such as our popular fashion Ghillie. We have been making many of the styles in this section for nearly 30 years and they continue to be a favourite amongst our customers.*





## Standard Ghillie Brogue 705 I

This is one of our most popular Ghillie brogues as it represents outstanding value for money. This Ghillie Brogue has a leather upper with a high shine finish and is leather lined to allow the foot to breathe. There is a full leather insole and padded top line for comfort. Featured on this shoe is the traditional steel quarter tip for maximum durability and authenticity. The leather sole unit is beautifully finished with a blake stitch.

- ✓ Standard grade ghillie brogue
- ✓ Genuine soft leather upper, polished finish
- ✓ Leather lined with full leather insole
- ✓ Padded top line for maximum comfort around the ankle and heel
- ✓ Steel quarter tip on heel for maximum durability and authenticity
- ✓ leather sole unit with stitched detail



## Entry level Ghillie Brogue 705 Ip

This Ghillie Brogue offers superb value if you are looking for an entry level brogue. The brogue has a leather upper with high shine finish and is leather lined to allow the foot to breathe with a half leather insole and padded top line for maximum comfort around the heel and ankle. This Ghillie Brogue has a refined smart rubber sole unit, making this shoe ultra-light and flexible whilst still offering durability.

- ✓ A variation of 705 I with a hard wearing man-made sole
- ✓ Genuine soft leather upper, polished finish
- ✓ Leather lined with half leather insole
- ✓ Padded top line for maximum comfort around the ankle and heel
- ✓ Refined durable rubber sole unit making this our lightest ghillie







### **Prudent Ghillie Brogue**

*A high-value, budget Ghillie Brogue developed specifically for kilt outfitters, using trademark Thistle design features without the added extras. Leather upper and lining with padded top line and half leather insole to allow the foot to breathe. This style has a thick durable rubber sole unit which is leather bonded for a finished leather effect and maximum durability.*

- ✓ High value Ghillie Brogue developed specifically for kilt outfitters
- ✓ Genuine soft leather upper, polished finish
- ✓ Leather lined with half leather insole
- ✓ Padded top line for maximum comfort
- ✓ Leather bonded thick rubber sole for ultimate durability



### **Fashion Ghillie brogue**

*This smart ghillie brogue has been made with the young fashion conscious gentleman in mind. Designed with a more fashionable square toe shape, it allows the gentleman to wear a traditional shoe with a slight modern twist and is very popular with the younger generation. This style has a leather upper and sole unit with a leather lined insole.*

- ✓ Fashionable toe shape
- ✓ Genuine leather upper
- ✓ Leather lined
- ✓ Soft comfort leather insole
- ✓ Leather sole unit.

## Ghillie Boot Black

A comfortable and hard wearing hybrid boot for recreation to semi-formal dress. The boot comprises of black waxy leather upper. The boot inside has a leather upper and lining to allow the foot to breathe with an extra padded top line for maximum comfort. The sole unit has a rugged rubber commando finish.

- ✓ Genuine waxy leather upper for added wet weather protection
- ✓ Leather lined
- ✓ Rugged rubber commando style sole unit
- ✓ Padded top line and insole for maximum comfort



## Boys Ghillie Brogues

This is the same classic Ghillie Brogue style as the adults with leather upper and lining to allow the foot to breathe. There are two sole unit options depending on your preference – Rubber sole unit for good grip 'starts at infants sizes or Leather sole unit for a smarter finish start at child size 1.

- ✓ Genuine leather smooth upper with subtle shine finish
- ✓ Leather lined
- ✓ Full leather insole
- ✓ Available in leather sole unit or manmade flexible sole unit with grip

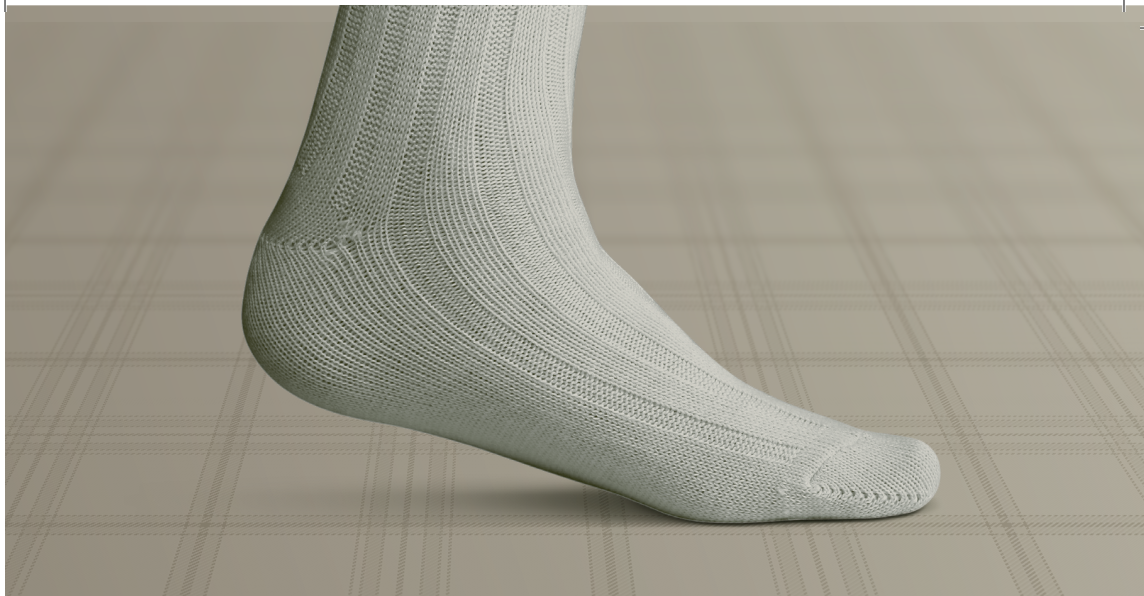




# Hose

*Manufactured in Britain our kilt hose offer the highest quality spun yarns with added nylon to ensure durability and maximum comfort. Both our premier and budget kilt hose are available in a range of colours including a diamond patterned top. We also offer a Piper hose especially for Pipebands.*





### **Premium – men & boys**

*A luxury kilt hose made with a high percentage of premium wool*

- ✓ 80% Wool for maximum comfort
- ✓ 20% Nylon for added durability

### **Budget – men & boys**

*A kilt hose alternative offering high-value for kilt outfitters and the price conscious*

- ✓ Contain elastane for maximum stretch





# Highland Dance

Our dancing range is 100% hand crafted in Scotland and our manufacturing. Division has over 30 years' experience in this specialist field and we have a vast selection of dance pumps in our collection.. We use the highest grade leathers in our dance shoes, with soft leather for the uppers and the most durable and flexible leathers for the insole and sole unit. Every pair of our dance shoes includes a noene shock absorber to help prevent injuries. Our shoes are renewed for their comfort and quality and worn by world champion dancers.



## Glenshee

The Glenshee is one of our most popular competition pumps. This style comes in red, blue, purple or dark green. Offering both contrasting eyelets and stitching to allow your shoes to match with your highland dress.

The upper is made from soft black leather and has 4 fingers with a front seam and loop. There is an extra eyelet at the ankle for better support. The sole unit is soft and flexible chrome suede. The insoles are fitted with the highest quality shock dispersion units that absorb 98% of the shock, helping to prevent injuries such as shin splints. The style is straight lasted to give a great point. The pumps come with a cotton shoe protector bag.

- ✔ Excellent pump for competitions
- ✔ Contrasting eyelets and stitching (available in red, blue, dark green and purple)
- ✔ Soft black leather upper
- ✔ Front seam and loop
- ✔ Extra eyelet at the ankle for better support
- ✔ Soft and flexible chrome suede sole unit
- ✔ Noene Shock dispersion technology absorbing 98% of impact
- ✔ Includes cotton shoe protector bag
- ✔ Handmade in Scotland







## Glenalmond

This is our own original highland dance pump. The style has 4 fingers whole cut soft black leather upper with contrasting silver eyelets and stitching. There is no front loop or front seam. There is an extra eyelet at the ankle for better support. The sole unit is soft and flexible chrome suede. The insoles are fitted with the highest quality shock dispersion unit that absorbs 98% of the shock, helping to prevent injuries such as shin splints. The pump is arch lasted to give a superb point and is perfect for narrow feet. The pumps come with a cotton shoe protector bag.

- ✓ Silver eyelets and stitching
- ✓ Soft black leather upper
- ✓ No front seam and loop
- ✓ Extra eyelet at the ankle for better support
- ✓ Soft and flexible chrome suede sole unit
- ✓ Arch lasted to help accentuate the point.
- ✓ Noene Shock dispersion technology absorbing 98% of impact
- ✓ Includes cotton shoe protector bag
- ✓ Handmade in Scotland



## Iona

This is a competition pump. This style has three fingers and is whole cut from soft black leather upper with no front seam or loop. There is an extra eyelet at ankle for better support. The sole unit is soft and flexible with black suede. The insoles are fitted with the highest quality shock dispersion unit that absorbs 98% of the shock, helping to prevent injuries such as shin splints. This Ghillie is perfect for the expert dancer offering a superb point. The pumps come with a cotton shoe protector bag.

- ✓ Competition pump
- ✓ Three fingers instead of 4
- ✓ Soft black leather upper
- ✓ Whole cut with no front seam and loop
- ✓ Extra eyelet at the ankle for better support
- ✓ Soft and flexible black suede sole unit
- ✓ Noene Shock dispersion technology absorbing 98% of impact
- ✓ Includes cotton shoe protector bag
- ✓ Handmade in Scotland

## Argyle

*This is our gentleman's dancing ghillie. The style has a soft black leather upper with a front seam and loop. There is an extra eyelet at the ankle for better support. The sole unit is soft and flexible chrome suede. The insoles are fitted with the highest quality shock dispersion unit that absorbs 98% of the shock, helping to prevent injuries such as shin splints. The argyle is left and right lasted to give more of a generous fit. The pumps come with a cotton shoe protector bag.*

- ✓ Excellent gentlemen's ghillie
- ✓ Soft black leather upper
- ✓ Front seam and loop
- ✓ Extra eyelet at the ankle for better support
- ✓ Soft and flexible chrome suede sole unit
- ✓ Left and right lasted to give more generous fit
- ✓ Noene Shock dispersion technology absorbing 98% of impact
- ✓ Includes cotton shoe protector bag
- ✓ Handmade in Scotland



## Loch Lomond

*This style has 4 fingers with a soft black leather upper and contrasting white eyelets and stitching. There is a front seam with no front loop. There is an extra eyelet at the ankle for better support. The sole unit is soft and flexible chrome suede. The insoles are fitted with the highest quality shock dispersion units that absorb 98% of the shock, helping to prevent injuries such as shin splints. The style is straight lasted to give a great point. The pumps come with a cotton shoe protector bag.*

- ✓ Contrasting white eyelets and stitching
- ✓ Soft black leather upper
- ✓ Front seam without loop
- ✓ Extra eyelet at the ankle for better support
- ✓ Soft and flexible chrome suede sole unit
- ✓ Noene Shock dispersion insole absorbing 98% of impact
- ✓ Includes cotton shoe protector bag
- ✓ Handmade in Scotland







## Skye

*This ghillie is on an arched last to give a great point and is perfect for narrow feet. The upper is made from soft black leather upper with a front seam and front loop. There is an extra eyelet at the ankle for better support. The sole unit is soft and flexible black suede. The insoles are fitted with the highest quality shock dispersion unit that absorbs 98% of the shock, helping to prevent injuries such as shin splints. The pumps come with a cotton shoe protector bag.*

- ✓ Soft black leather upper
- ✓ Front seam and loop
- ✓ Extra eyelet at the ankle for better support
- ✓ Soft and flexible black suede sole unit
- ✓ Arch lasted to help accentuate the point.
- ✓ Noene Shock dispersion technology absorbing 98% of impact
- ✓ Includes cotton shoe protector bag
- ✓ Handmade in Scotland







# Country Dance

Our dancing range is 100% hand crafted in Scotland and our manufacturing division has over 30 years' experience in this specialist field and we have a vast selection of dance pumps in our collection. We use the highest grade leathers in our dance shoes, with soft leather for the uppers and the most durable and flexible leathers for the insole and sole unit. Every pair of our dance shoes includes a noene shock absorber to help prevent injuries.



## Countess

Available in a Black, Blue, Brown or White soft glove leather upper with elasticated top line and cushioned insole for extra comfort. The sole unit has a soft and flexible black or chrome suede. The insoles are fitted with the highest quality shock dispersion unit that absorbs 98% of the shock, helping to prevent injuries such as shin splints. This style is straight lasted and perfect for slender feet.

- ✓ Soft glove leather upper
- ✓ Available in range of colours
- ✓ Cushioned insole for extra comfort
- ✓ Soft and flexible black sole unit (options of topey and micro rubber sole units)
- ✓ Noene Shock dispersion insole absorbing 98% of impact
- ✓ Includes cotton shoe protector bag
- ✓ Handmade in Scotland
- ✓ Extra elastic for instep
- ✓ White micro rubber sole unit option



Different sole units can be requested:

Standard Full black or chrome suede

Topy - None slip rubber sole unit (ideal for less confident dancers)

## Royale

Available in a Black, Blue, Brown or White soft glove leather upper with elasticised top line and cushioned insole for extra comfort. The sole unit has a soft and flexible black or chrome suede. The insoles are fitted with the highest quality shock dispersion insole that absorbs 98% of the shock, helping to prevent injuries such as shin splints. This is lasted on a left and right last.



Countess Sizes 2 - 9

Available with Black/Chrome suede or Topy



Royal sizes 2 - 9

Available in Black/Chrome Suede, Topy or White/Black Micro Rubber,



Different sole units can be requested:

Standard Full black or chrome suede

Topy - None slip rubber sole unit (ideal for less confident dancers)

Black micro rubber sole unit with a slight heel.



## Countess Regal

*Available in snake print skin, red or black patent leather with elasticated top line and cushioned insole for extra comfort. The sole unit has a soft and flexible black or chrome suede. The insoles are fitted with the highest quality shock dispersion unit that absorbs 98% of the shock, helping to prevent injuries such as shin splints. This style is straight lasted and perfect for slender feet.*



### Countess Regal Sizes



2 - 9 Available with Black/Chrome Suede or topy sole unit options.



## Royale Regal

*Available in snake print skin, red or black patent leather with elasticised top line and cushioned insole for extra comfort. The sole unit has a soft and flexible black or chrome suede. The insoles are fitted with the highest quality shock dispersion insole that absorbs 98% of the shock, helping to prevent injuries such as shin splints. This is lasted on a left and right last.*

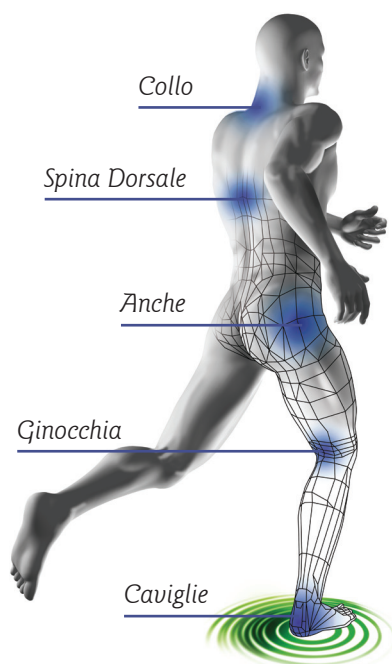


### Royale Regal



2 - 9 Available in Black/Chrome Suede, Topy or White/Black Micro Rubber.











Your guarantee of the highest quality protection NOENE is the ultimate shock absorption and dispersant system, absorbing about 98% of the shock which in turn helps to relieve and rule out back pain, tendinitis and repetitive strain injuries. It has also passed the strictest tests to become a Class 1 medical device, the only shock dispersing insole to do so, which means it has proven medical benefits.

**+** **SWISS MADE**  
UNDER ISO 9001 & 14001

[illegible]

# Size Charts

Boys		4	5	6	7	8	9	10	11	12	13	1	1.5	2	2.5	3	3.5	4	4.5	5	5.5
Rubber Sole		•	•	•	•	•	•	•	•	•	•	•	•	•	•	•	•	•	•	•	
Leather Sole												•	•	•	•	•	•	•	•	•	

			X-Small	Small	Medium	Large	X-Large
MAN	Premium		<div></div>	<div></div>	<div></div>	<div></div>	<div></div>
	Budget			<div></div>	<div></div>	<div></div>	
BOY	Premium		<div></div>	<div></div>	<div></div>	<div></div>	<div></div>
	Budget			<div></div>	<div></div>	<div></div>	





# Tough as nails. T

*Every school child in Scotland knows the story of the thistle. In the Middle Ages, the Scots and the Norsemen were at war. King Haakon of Norway and his men landed at the Coast of Largs at night intent on surprising their Scottish foe. Removing their boots, they crept on bare feet towards the Scottish army. Then one of the attackers stepped on the sharp spines of a Scots thistle. The yell he made at this unwelcome assault on his feet alerted the Scots who drove the attackers from their shore.*

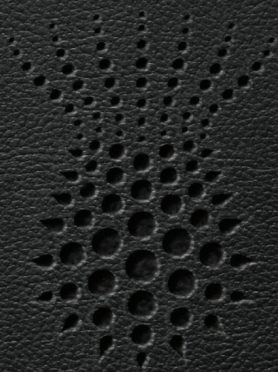


# Heart of gold.



*The Scotch Thistle or Cotton Thistle is a contrary beast. On the one hand it presents, to put it mildly, a tough exterior with "the most horrible sharp prickles, so that it is impossible for man or beast to touch the same without great hurt and danger." Yet on the other, the lavender coloured flower heads are soft and delicate, making it one of the most beautiful of British plants.*





# THISTLE SHOES - SCOTLAND -

*Thistle Shoes is owned & operated by*

**A. E. Struthers Ltd  
Unit 3, Newark Road South  
Eastfield Industrial Estate  
Glenrothes, Fife  
SCOTLAND  
KY74NS**

**+44 (0) 1592 779111**

**[www.thistleshoes.com](http://www.thistleshoes.com)**